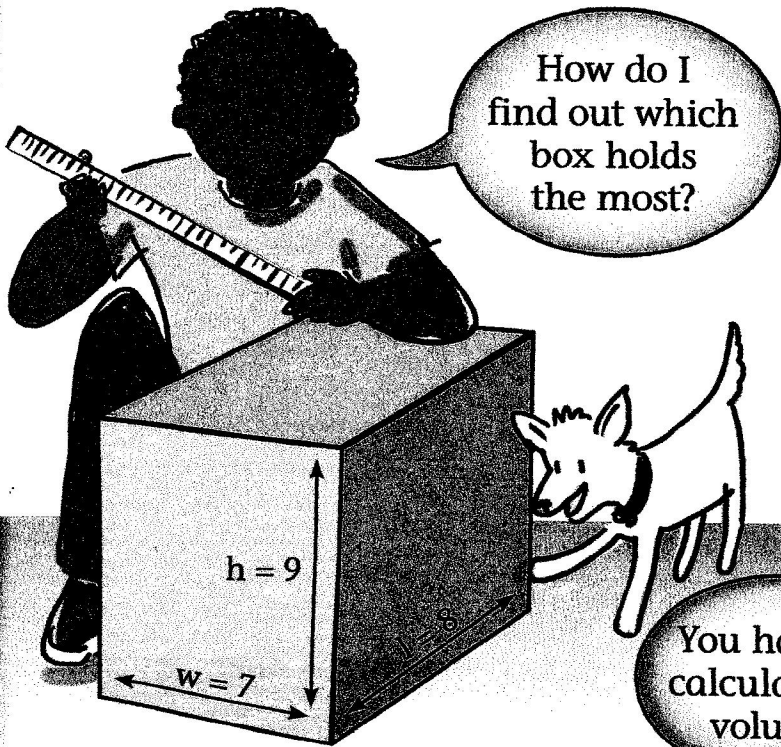
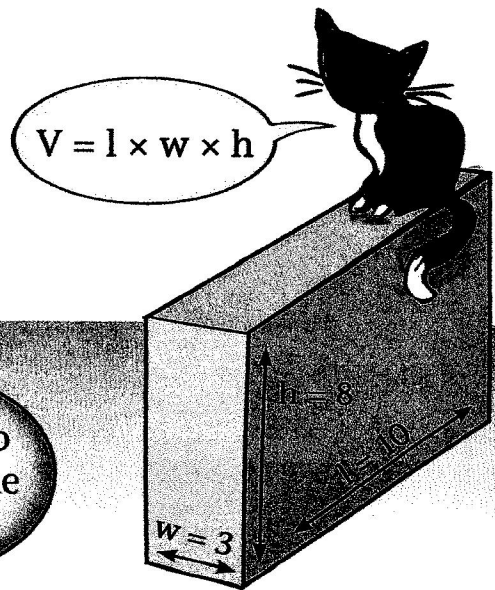


Volume

Skill: Measure the volume of rectangular prisms









Volume is the space inside a three-dimensional figure, measured in cubic units.



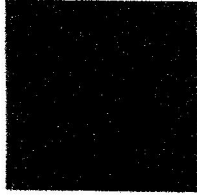
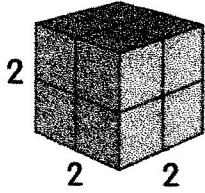
You have to calculate the volume.

- 1 Lay out the mats and the cards.
- 2 Count the unit cubes in each figure on the mats to determine the volume of the figure.
- 3 Place the card that shows the answer in the blue square.
- 4 Complete the response form.

Volume	
1)  <input type="text" value="8"/>	2)  <input type="text" value=""/>
3)  <input type="text" value=""/>	4)  <input type="text" value=""/>
5)  <input type="text" value=""/>	6)  <input type="text" value=""/>

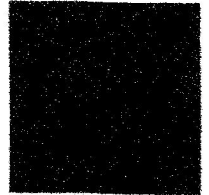
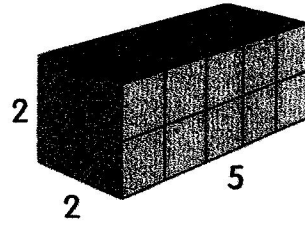
Volume

1



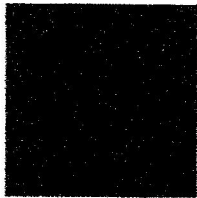
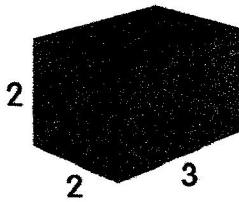
cubic units

2



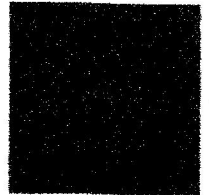
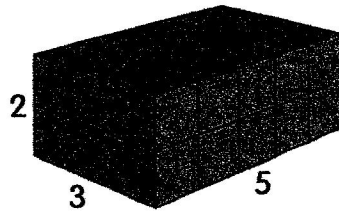
cubic units

3



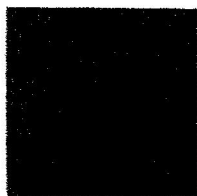
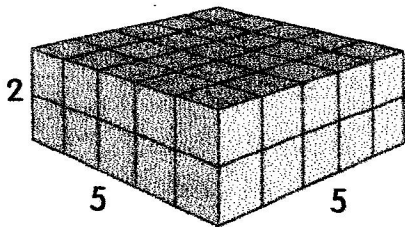
cubic units

4



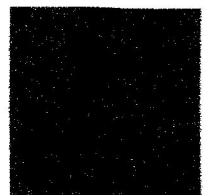
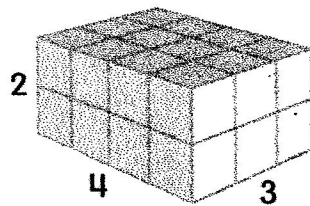
cubic units

5



cubic units

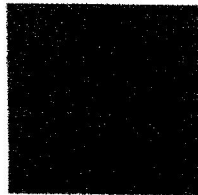
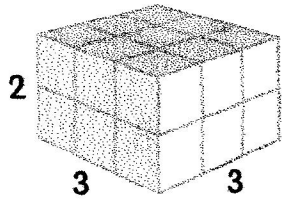
6



cubic units

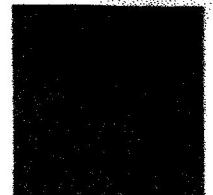
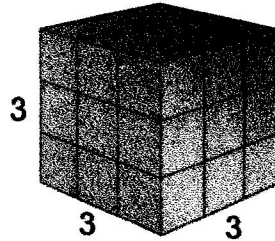
Volume

7



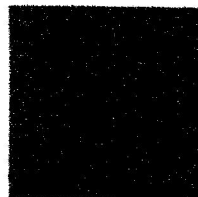
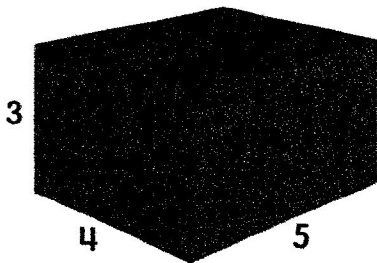
cubic units

8



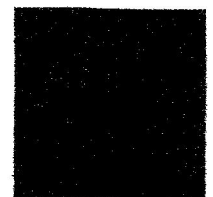
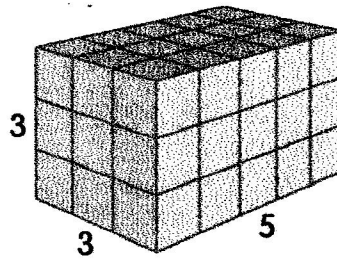
cubic units

9



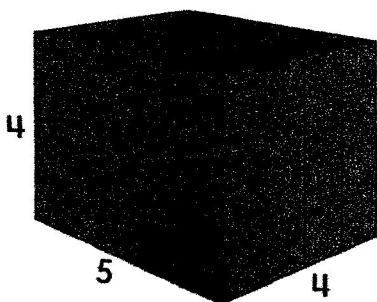
cubic units

10



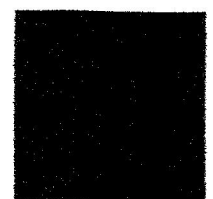
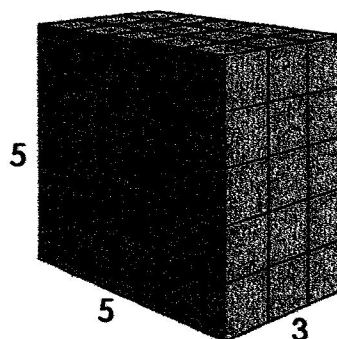
cubic units

11



cubic units

12



cubic units

8	10	12	15	17	18
20	22	24	27	29	30
38	40	42	45	47	48
50	52	54	57	59	60
68	70	72	75	77	78
80	82	84	87	89	90

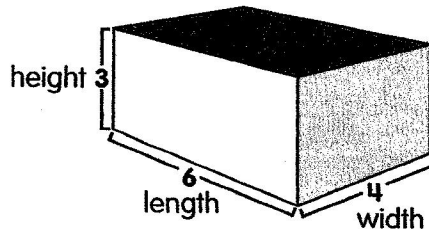
Volume

Volume

$$V = l \times w \times h$$

(Volume = length \times width \times height)

Volume is measured in cubic units.



$$\begin{array}{r} 6 \text{ length} \\ \times 4 \text{ width} \\ \hline 24 \\ \times 3 \text{ height} \\ \hline 72 \text{ cubic units} \end{array}$$

Look at the mats. Use the formula above to compute the volume for each figure. Show your work and write the answer on the line. Do your answers match the answers on the mat?

①	②	③	④
_____ cubic units	_____ cubic units	_____ cubic units	_____ cubic units
⑤	⑥	⑦	⑧
_____ cubic units	_____ cubic units	_____ cubic units	_____ cubic units
⑨	⑩	⑪	⑫
_____ cubic units	_____ cubic units	_____ cubic units	_____ cubic units